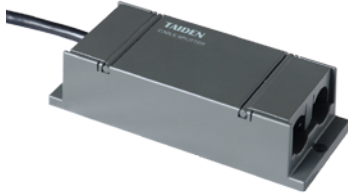


## HCS-4852T 8-pin Cable Splitter




---

### Features

- Relay facility, amplification of the communication signals
- 8P-DIN interfaces, "1 in / 3 out " structure for connection
- 2m-cable with a 8P-DIN connector at the input end
- Three 8PIN output interfaces, can drive 60-meter long extension cable
- Dimensions (h x w x d): 35 x 149 x 90 mm

---

### Ordering Information

HCS-4852T.....8-pin Cable Splitter (1 input & 3 outputs,  
for HCS-4800 and HCS-8600 series)